

# Southwark Business Guide and Directory 2017





# YOU WILL KNOW US BY THE PLACES WE CREATE



Putting the meaning into meanwhile use. Platform is a multi-discipline temporary project space in Southwark with a mission to encourage and promote groundbreaking art, music and performance. Commended by the New London Awards 2016 (The Temporary) and nominated for the Estates Gazette Awards 2016 (Creative Spaces Award).

[www.platformsouthwark.co.uk](http://www.platformsouthwark.co.uk)  
[www.uandiplc.com](http://www.uandiplc.com)



ONE BLACKFRIARS  
LONDON

# LONDON'S NEW MASTERPIECE



Dedicated Harrods Estates Concierge • Valet Parking  
Health Club with Spa, Swimming Pool & Gym • Private Screening Room  
Wine Cellar • 32<sup>nd</sup> Floor Executive Lounge

**Prices from £1,150,000\***

**0203 797 1993 | [www.oneblackfriars.co.uk](http://www.oneblackfriars.co.uk)**



Proud to be a member of the  
Berkeley Group of companies



**St George**  
Designed for life

Price and details correct at time of going to print.  
Computer enhanced image depicts One Blackfriars and is indicative only.

# mi home care

Your local care provider

We support people to live happier and more independent lives in the comfort of their own homes.

Whether you're looking for care and support for yourself or a loved one, we can help. From preparing meals and help with getting out and about, to full-time live-in support, we can provide the care you need, when you need it.

Contact your local Southwark branch on **0333 121 4901** or find a branch near you at [www.mihomecare.com](http://www.mihomecare.com)



## complete care

Enriching lives through  
exceptional care

Complete Care is a leading provider of nurse-led complex healthcare in the home. We work closely with the children and adults in our care to enable them to lead full and independent lives.

Contact us on **0333 121 5301**  
or visit our website [www.completecare.co.uk](http://www.completecare.co.uk)



# Building communities. Transforming lives.

Creating better places to live for thousands of families in Southwark.



- Abbeyfield Estate
- Arnold Estate
- Astley Estate
- Bonamy Estate
- Castlemead Estate
- Champion Hill Estate
- Downton Estate
- East Dulwich Estate
- Four Squares Estate
- Glebe Estate
- Ledbury Estate
- North Peckham Estate
- Oliver Goldsmith Estate
- Plough Way Estate
- Purbrook Estate
- Sceaux Gardens Estate
- Tabard Gardens Estate
- Tustin Estate

Transforming lives and communities



We deliver a wealth of **community** activities for Southwark residents **every** year



24% of our Southwark workforce is made up of trainees, apprentices and graduates

We don't just fit doors, we open them providing local jobs for around 200 people

Delivering more than homes



Not only have we been refurbishing homes across Southwark for over 10 years, we're experts in regeneration and new build, educational and public buildings, elderly care and social housing.

- ▶ Warm, Dry & Safe
- ▶ Rooftop Developments
- ▶ New Build

To find out why we're more than builders visit our website [www.keepmoat.com](http://www.keepmoat.com) or call us on **01992 650 333**

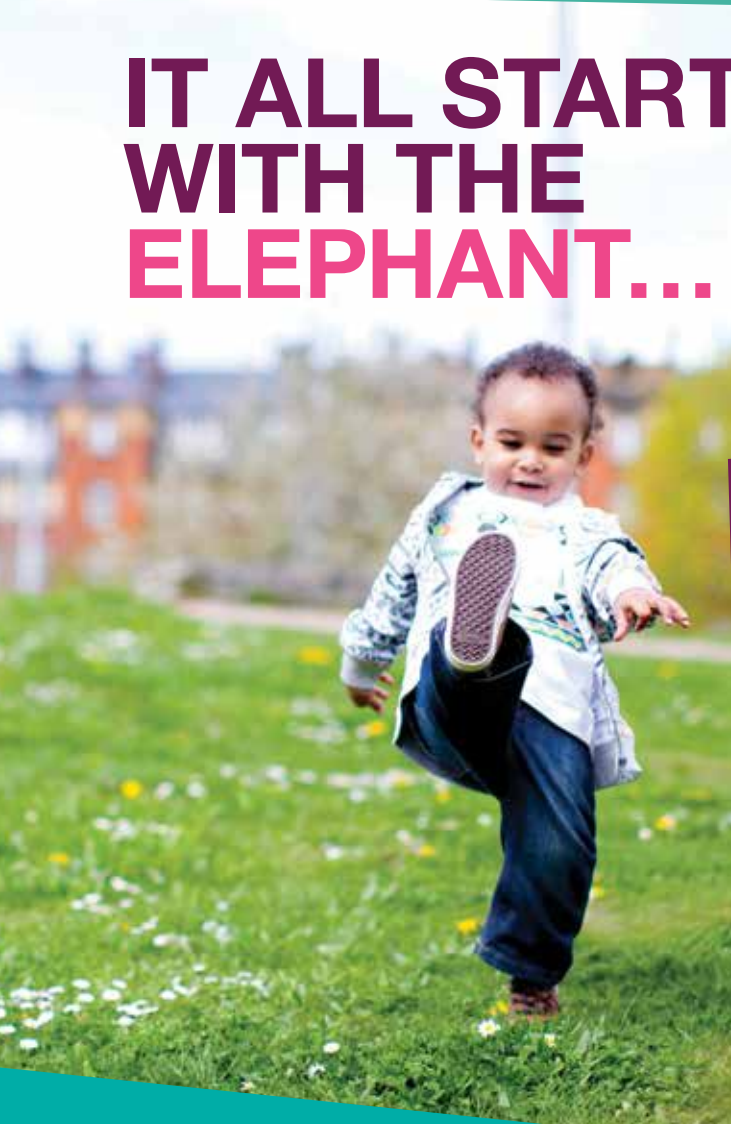
Lines are open Monday - Friday - 8am - 5pm





Changing thinking  
on urban regeneration  
not only on a local scale,  
but a global one

# IT ALL STARTS WITH THE ELEPHANT...



OUR £1.5BN REGENERATION OF ELEPHANT & CASTLE IS SET TO RE-ESTABLISH THE AREA AS THE MOST EXCITING NEW NEIGHBOURHOOD IN LONDON, PROVIDING NEARLY 3,000 NEW HOMES, A NEW CENTRAL SHOPPING STREET AND CENTRAL LONDON'S LARGEST NEW PARK FOR 70 YEARS.

But it's not just about what we are building, **it's how we are doing it.** Our world leading plans are seeking to use the vast scale of the project to tackle some of the most challenging issues currently facing cities like London, from reducing our **impact on the environment** to stimulating **economic growth.**

## HOW CAN YOUR BUSINESS GET INVOLVED?

With the project set to run until 2025 there will be a whole host of opportunities for local businesses to get involved, from contracts in construction to opportunities for businesses in the creative industries.

To register your interest as a supplier or consultant, email: [ele-ask@lendlease.com](mailto:ele-ask@lendlease.com)

To find out more about the regeneration visit: [www.lendlease.com/elephantandcastle](http://www.lendlease.com/elephantandcastle)



Central London's  
new green heart

The Life.  
The Heart.  
The Elephant!

In Partnership with



# Southwark Business Guide and Directory 2017

**Published by:**

Burrows Communications Limited  
Cantium House, 2nd Floor,  
Railway Approach, Wallington SM6 0DZ  
Tel: 020 8773 3000 • Fax: 020 8669 0301  
email: postmaster@burrows.co.uk  
www.burrows.co.uk

**Please note:** This publication is wholly or partially funded by the advertisers herein and the publisher. It is provided at no charge to the council.

**Our Advertisers:**

We gratefully acknowledge the support of all the firms whose advertisements appear in these pages. Without their help we would not be able to produce this business guide. As a reciprocal gesture we have pleasure in drawing the attention of our readers to their announcements, but wish to make it clear that Southwark Council can accept no responsibility for their products or services advertised.



# MORE THAN JUST LOCAL COLLEGE

**The Southwark Campus of Lewisham Southwark College opened its doors in September 2016 following its £41 million redevelopment - creating the most innovative and up-to-date learning space in London.**

**The innovative design won awards before it even opened, and offers students a modern way of learning - with open access learning spaces, current technology including computer rooms, Mac suites and iPads, as well as industry standard facilities including science labs, dance studios and fashion workshops.**

**Located at 25 The Cut (opposite Southwark Tube station) - the College delivers a wide range of courses with a focus on ensuring that all students leave with skills for employment. The College also has a reputation for developing innovative and dynamic learning and development solutions for an extensive range of public and private sector employers of all sizes, from the micro business to the large multinational.**

**LEWISHAM  
SOUTHWARK  
COLLEGE**

## **Apprenticeships**

The College is a well-established provider of apprenticeships and was recently voted Apprenticeship Training Provider of the Year 2016. We've a wide range of high quality apprenticeships in sectors such as: Cultural & Creative, Construction, Business & Finance and Hospitality & Catering.

Not only can we support you with high quality Apprenticeship Programmes for your existing staff but we can also help you to recruit apprentices into roles you need to fill. We can provide an Apprenticeship Recruitment Service which identifies the right people to fit your business who would be presented to you for interviewing - the rest would then be up to you with regards to selection.

## **Short Courses and Bespoke Courses**

The College runs a wide range of Short Courses in topics such as Management, Finance, ICT, Health & Safety and Customer Service. They're great because they don't require a huge commitment of time and often provide a quick fix to address a small development need.

Anyone of these programmes can be tailored to meet your needs via one of our Bespoke Courses where one of our team of experts are available to talk through your specific needs and then design a programme to your exact requirements. Our programmes can be delivered at our campuses, at your offices or at another venue of your choice.

We're always looking to expand our offering for work experience opportunities to our students. If you feel you could help, please contact us!

The College also offers: online courses, international students full and part time courses, evening courses, and a wide range of short courses in both CPD and hobby based subjects.



# YOUR

# LEWISHAM SOUTHWARK COLLEGE

“

**£41 million redevelopment -  
creating the most innovative  
and up-to-date learning  
space in London**

”



Please get in contact with us for further information on any of the above:

**EmploymentSkillsSales@lesoco.ac.uk**  
**020 3757 3050**

**Southwark Campus:**  
**25 The Cut, London SE1 8LF**

**lesoco.ac.uk**



**Building for  
the future**



**0203 883 4124**

**Fairview**<sup>®</sup>  
NEW HOMES Ltd.

[www.fairview.co.uk](http://www.fairview.co.uk)

Details correct at time of going to press. Images representative only.

# Contents

Introduction from Cllr Situ . . . . .	11
The Southwark Economic Wellbeing Strategy 2017-22: what the council will do . . .	13
Employment and Skills . . . . .	15
Business . . . . .	21
Thriving Town Centres and High Streets . . . . .	26
Financial Wellbeing. . . . .	29
Employment Support Projects . . . . .	34
Useful Council Contacts . . . . .	37
Southwark Business Networks . . . . .	38

For full directory listings please see information on inside back cover.



Research-led and based in the **heart of London**

---

One of the **top 20 universities** in the world

---

The **fourth oldest** university in England

---

King's has over **27,600** students (graduate and postgraduate) from **150** countries and almost **6,800** employees on five campuses and is working in partnership with Southwark Council to establish a sixth at Canada Water.

King's provides world-class teaching and research with a distinguished reputation in the humanities, law, sciences of health areas such as psychiatry, medicine, nursing and dentistry, and social sciences including international affairs.

For more information see [www.kcl.ac.uk](http://www.kcl.ac.uk)




3036961

# Morgan Sindall

## Investment, Construction and Housing | Building London's Social Infrastructure



**Albion Primary School, Southwark**



**Bellenden Primary School, Southwark**



**Moreland Primary School, Islington**

Morgan Sindall is a UK construction, infrastructure and design business. Our network of local offices delivers projects ranging in value from £50,000 to over £1 billion for public and private sector clients. Our work ranges from small scale fit outs to major urban regeneration schemes. We have the balance of capability to work across sectors including education, leisure, healthcare, commercial, retail and industrial.

Through Morgan Sindall Group, we are able to provide a complete service; from a traditional approach, to bringing investment to developments, through to construction and regeneration.

Our strength comes from this balance of activity and ability to provide integrated solutions across services. We aim to provide a consistently exceptional delivery experience - an ethos which makes Morgan Sindall an ideal capital investment partner.



**Lambeth Town Hall regeneration scheme**



For further information please contact Richard Dobson, Area Director  
 1 Eversholt Street, Kings Cross, **London**, NW1 2DN  
 T 020 7383 5730

[morgansindall.com](http://morgansindall.com)
in
t

**MORGAN SINDALL**  
CONSTRUCTION INFRASTRUCTURE

# Introduction from Councillor Situ

Welcome to the fourth edition of the Southwark Business Directory.

Southwark is one of the best places in London to start and grow a business, making our borough a thriving centre of enterprise for the capital, home to over 15,000 businesses and over a quarter of a million jobs.

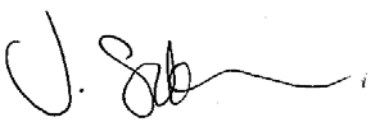
As a council we value the contributions made by our businesses to the local economy and wellbeing of our residents. Businesses provide jobs, take on and train apprentices and bring life to our town centres. Our refreshed Economic Wellbeing Strategy for 2017-2022 renews our commitment to local growth that provides opportunities for our residents to fulfil their aspirations.

We've already made great strides; Southwark now has record numbers of residents in employment, dozens of businesses paying the London Living Wage and our town centres are thriving. With our partners in the BIDs, business networks, Chambers of Commerce and the Southwark Business Forum, every day we are demonstrating that we are a borough that is open for business.

Our ambition is that Southwark is a growth borough, where business thrives and prospers. To achieve this we will:

- Encourage business growth in Southwark's regeneration areas by pro-actively engaging with investors and developers, marketing Southwark as a place to do business
- Protect viable employment land and encourage its development to meet current and future business needs through the use of strong and effective planning policies
- Provide 500 new creative and small business units by 2018, by encouraging developers to include work space as early as possible in the planning process and setting out clear requirements for its provision
- Invest in our relationships with large and small businesses through the Southwark Business Forum and other key business networks including BIDs, the Chamber of Commerce and others
- Ensure our customer access strategy recognises business as valued customers, which are provided with responsive, quality services that meet their needs
- Listen to and understand the skills needs of our employers, broker relationships with local providers and ensure training provision responds accordingly
- Invest in and encourage the development of affordable and flexible workspace that meets the needs of start-up and growing businesses
- Support small businesses to grow by providing information, advice and guidance through the business portal and through targeted programmes of support such as SEEDS

I look forward to working together with you to make Southwark an even better place for businesses to start, grow and succeed.



Councillor Johnson Situ, Cabinet Member for Business, Employment and Culture

# THE SHARD



## A BEACON FOR MODERN LONDON AND AN INSPIRING PLACE TO WORK

Bring your brand to life in The Shard's world-class offices. Offering light-filled flexible floor spaces with spectacular views of the city – it's a platform for creativity and cultural change.

For information on available office space contact  
[leasing@the-shard.com](mailto:leasing@the-shard.com)

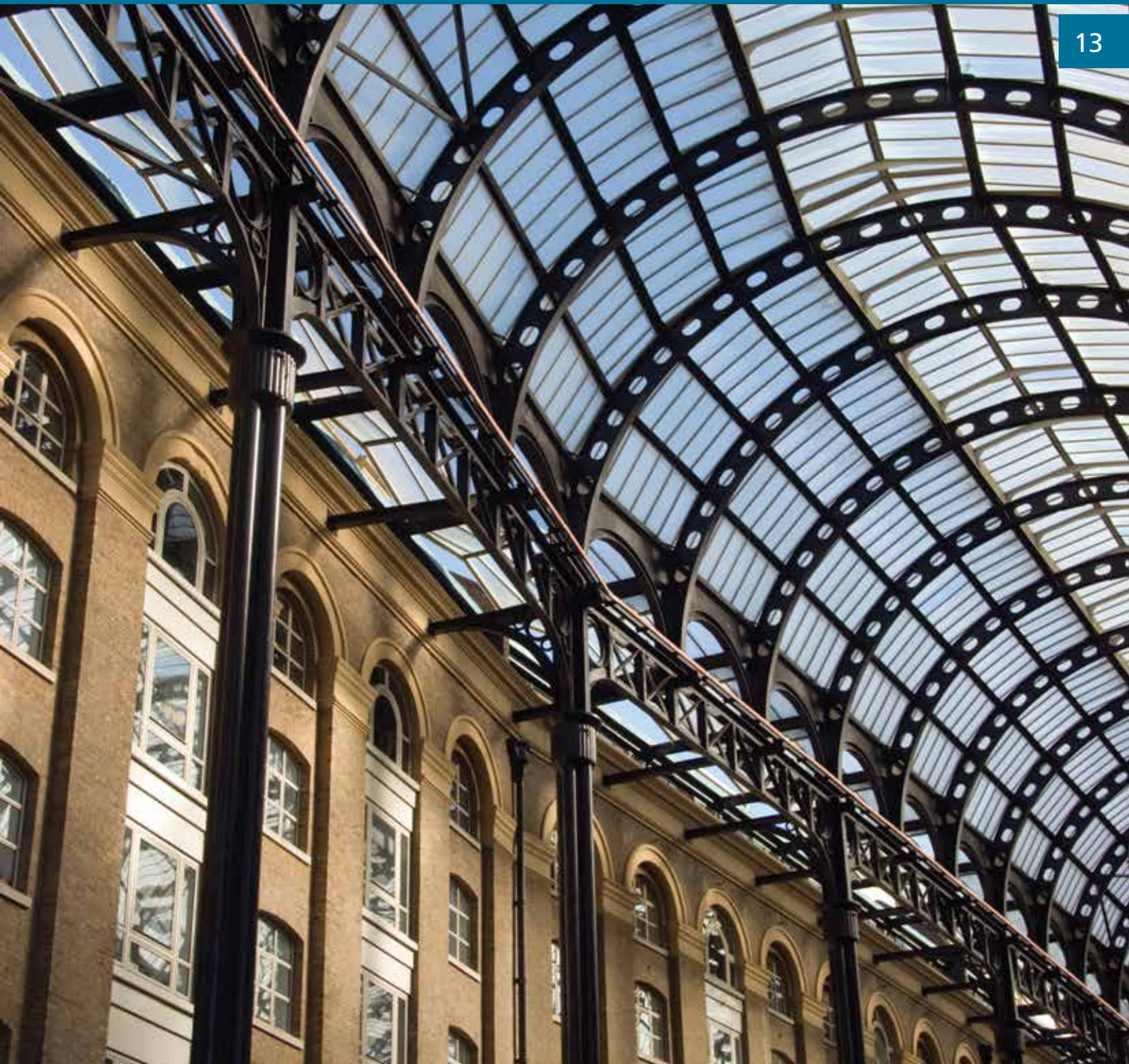


THE-SHARD.COM  
@THESHARDLONDON

# The Southwark Economic Wellbeing Strategy 2017-22: what the council will do

Using the Southwark Economic Wellbeing Strategy we will work with partners to achieve the following ambition themes:

1. Employment and skills
2. Business
3. Thriving town centres and high streets
4. Financial wellbeing



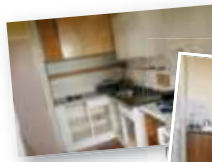
A Premier Refurbishment, 'Decent Homes', Maintenance and Roofing Contractor A&E Elkins is now a prominent enterprise working across London and the South East still maintaining its strong family values.



A&E Elkins Ltd is a progressive company – formed in 1963, now in its third generation and still offering excellence in workmanship and project delivery.

Our development includes trade memberships, quality control and CDM regulation compliance and all other aspects of modern contracting.

A&E Elkins, along with their family values have a positive outlook and commitment to the highest possible service standards from inception to completion.



Over the last 15 years following the diversification from being a roofing subcontractor, A&E Elkins now deliver 'Decent Homes', void refurbishment and maintenance projects for both Local Authorities and major housing associations.

We are currently part of the London Borough of Southwark's partnering framework and have been since 2009, covering Peckham, Nunhead and Dulwich. On the back of high Key Performance Indicator scores, we are into our second five-year term, including additional areas of Borough and Bankside and Walworth. As part of our commitment to the London Borough of Southwark, we have provided many apprentice opportunities for the local community as well as being the leading partner in resident initiatives across the borough and are fully section 106 compliant.



**Head Office**

Unit 1a  
Juni Way Trading Estate,  
London  
SE14 5RW

**London Office**

C/O Greencrest Ltd,  
Ferroners House,  
1 Shaftesbury Place,  
London,  
EC2Y 8AA

**Contact Us**

E-mail: [enquiries@aeelkins.co.uk](mailto:enquiries@aeelkins.co.uk)  
Phone: 020 8692 4960  
Fax: 020 8694 0329  
Website: [www.aeelkins.co.uk](http://www.aeelkins.co.uk)

Follow us on:

Facebook   
Twitter

3037628



**London South Bank University**  
EST 1892

**Staff Development**

- Part time undergraduate and postgraduate courses
- Continuing professional development
- Consultancy and mentoring
- Fully funded business support

**Applied Research**

- Match funded research scholarships
- Part or fully funded research
- Knowledge exchange schemes

**Talent Identification**

- Work experience
- Internships
- Placements
- Graduate prospects

**Facility Hire**

- Specialised equipment and laboratory hire
- Contemporary office space
- Training facilities
- Conference and meeting rooms

Find out how we can help you prosper  
Visit: [www.lsbu.ac.uk/business](http://www.lsbu.ac.uk/business)

3037114



**SALTASH**  
30 Years of Excellence

Building for a better quality of life

- New-build
- Refurbishment
- Planned Maintenance
- Responsive Repairs & Maintenance
- Disabled Aids & Adaptations
- In-house Scaffolding Division
- In-house Joinery Division
- 24 Hour Response

020 7277 5661 • [enquiries@saltashconstruction.co.uk](mailto:enquiries@saltashconstruction.co.uk)  
110-116 Orside Street, London SE15 1TF  
[www.saltashconstruction.co.uk](http://www.saltashconstruction.co.uk)

3037157



# Employment and Skills





16

Southwark is job-rich with more opportunities to work and build a career in a wider range of roles and sectors than ever before.

Employment is a key strategic priority for the council and we support frontline programmes to sustain the high employment rate in the borough and promote a strong local economy.

We aspire for all Southwark residents to have work that is fairly paid, underpinned by the council's lead on promoting the London Living Wage. We also want Southwark residents to have secure employment and the skills to progress beyond entry-level or insecure, low-paid work. We remain committed to making support into employment inclusive,

recognising the gender wage gap, childcare and housing costs, and other invisible barriers to work and progression that affect our residents.





### Our ambition is that:

- Southwark is a full employment borough with a job opportunity for every resident who wants to work
- Every Southwark resident in work has the opportunity to develop their careers in line with their aspirations
- Jobs are sustainable, with work that is fairly paid, reflecting our commitment to the London Living Wage and pay equality
- Every Southwark resident has the skills relevant to the jobs market and employer needs
- Local skills provision and training is of the highest quality and backed by a network of providers with strong employer and community links
- Every young person will leave education or training ready for work or able to start and grow their own business
- Southwark employers offer top quality apprenticeships, from entry to advanced level roles, and our residents are at the front of the queue to access them
- Regeneration and development continues to provide lasting jobs for residents in construction and related industries and in completed developments

- Southwark residents have access to a comprehensive support offer that supports their transition to employment
- Southwark's increased influence over devolved responsibilities and resources delivers better outcomes for residents

### To achieve this, we will:

- Support 5,000 residents into work by May 2018, through investment in Southwark Works and other targeted programmes, prioritising those residents furthest from the labour market.
- Create 2,000 apprenticeships by May 2018, through support for employers to create quality apprenticeships under the Southwark Apprenticeship Standard, promotion of opportunities to residents, and pre-apprenticeship support
- Work with employers to encourage and support accessible, fairly-paid and sustainable job opportunities by promoting the London Living Wage and helping businesses remove barriers to recruiting local people
- Support a high-quality and accessible Further Education and skills offer in the borough, with a broad curriculum that is responsive to employer needs and provides a route to a rewarding career

- Provide effective pathways for our young people from education to training and employment, supporting effective links between employers and education providers, providing quality advice and guidance, and offering additional support for those who need it
- Work with developers and the wider construction sector to create and promote opportunities for careers in construction for residents and provide the skills required by employers through the construction skills centre
- More effectively integrate services in areas such as health, housing, benefit services, and others to better address key barriers to employment
- Work in collaboration with our key partners including neighbouring local authorities, the Greater London Authority and others to secure investment, maximise on economies and deliver better outcomes for residents
- Use our influence to secure effective and appropriate devolution of resources and responsibilities for employment and skills provision



# *Working with the London Borough of Southwark to create an exciting mixed-use development at Canada Water*

---

Find out more at:  
[www.canadawatermasterplan.com](http://www.canadawatermasterplan.com)  
[www.britishland.com](http://www.britishland.com)  
[www.surreyquays.co.uk](http://www.surreyquays.co.uk)



# *British Land is developing its proposals for the Canada Water Masterplan, a major new urban centre on the Rotherhithe peninsula.*

The Masterplan incorporates Surrey Quays Shopping, the SE16 Printworks, Surrey Quays Leisure Park and the recently acquired Grade II-listed historic Dock Manager's Office and 1-14 Dock Offices.

It proposes new workspaces, retail and restaurants, alongside leisure and entertainment, new homes, new parks and public spaces, plus a proposed replacement for the Seven Islands Leisure Centre and a potential higher education element.

British Land's vision is that major employers can thrive side-by-side with start-ups and independent stores in the range of office space, retail, and food and beverage premises that it proposes.

The employment and business opportunities generated will benefit Southwark residents and enterprise alike. The completed scheme expects to provide up to 15,000 jobs, with around 2million sq ft of workspaces, alongside 1million sq ft of retail, public realm, restaurants and entertainment. Approximately 1,800 full time roles in construction would be generated over a 15-year development period.

The development will also provide programmes to assist local residents to access employment opportunities, and seek to work with existing businesses around Canada Water to ensure they can benefit from the Masterplan. Through working with Southwark council, the community and local

businesses to establish priorities and targets for local business and employment, British Land aims to deliver a transformative project for local economy.

The Masterplan team is currently hosting focus sessions to explore the key themes raised through the consultation so far. The revised Masterplan will be shared with local businesses, stakeholders and the community for further feedback as it evolves, ahead of a planning submission in 2017.



# THE TRANSFORMATION OF THE FORMER SOUTHWARK TOWN HALL BY ALUMNO DEMONSTRATES THE IMPORTANCE OF WORKING WITH THE RIGHT PEOPLE



Alumno and their main contractor HG Construction have completed the radical and visionary redesign of the former Southwark Town Hall, now known as the Alumno Building.

The Alumno approach is rooted in community-based participation, and involves the planning, design, management and programming of shared use spaces. We have successfully delivered student housing and mixed-use developments throughout the UK for the past 10 years and have used this experience to fully realize the potential of the town hall building.

Alumno more than just designed the spaces; our placemaking strategy for the town hall brings together diverse people and organizations to improve a community's cultural, economic and social offering, values appreciated by the council. The town hall aims to make a place and demonstrate that people of all ages, abilities, and socio-economic backgrounds can not only access and enjoy a place, but also play a key role in its identity, creation and ongoing sustainability.

The Alumno Building opened in September and provides a new home for students studying at the world famous Goldsmiths, University of London and affordable artists studios managed by SPACE studios. The building also provides a new, modern and state-of-the-art children's theatre. "Theatre Peckham" will continue to provide and run courses and workshops which offer significant opportunities to local young people to engage with the creative arts from an early age.

[www.alumnodevelopments.com](http://www.alumnodevelopments.com)



20

3037481





**VISIT OUR  
2 COMMUNITY CENTRES  
IN WALWORTH**

- ROOM HIRE
- CAFÉ
- COMPUTER CLASSES
- ART GROUP
- WOMEN'S GROUP
- PARENTING GROUP  
(adult parenting programme  
and young parents programme)
- YOUTH EMPLOYMENT
- YOUTH CLUBS
- YOUTH ARTS PROGRAMME





Find out more: telephone 020 7740 6868 website [www.in-spire.org.uk](http://www.in-spire.org.uk)

 @InSpireWalworth  
@inspiredtowork

 inspiredtowork  
2inspireyouth

InSpire, The Crypt at St Peter's, Liverpool Grove,  
Walworth, London SE17 2HH

3037132

**ual:** london college  
of communication



**LONDON COLLEGE OF COMMUNICATION IS A PIONEERING  
WORLD LEADER IN DESIGN, MEDIA AND SCREEN EDUCATION**

- \* Short courses
- \* Professional training
- \* Undergraduate & Postgraduate courses

We also work with businesses to solve challenges and create innovative concepts, services and experiences.

[www.arts.ac.uk/lcc](http://www.arts.ac.uk/lcc)  
@LCCLondon

3037329

# Business





22

Southwark is a business-friendly borough. We host a significant proportion of the central London economy, home to over 15,000 businesses and over a quarter of a million jobs. Our proximity to the huge markets of central London combined with our growing connectivity, strong cultural sector, unique attractions and iconic developments make this a highly visible and desirable location for business.

With strong representation in growth sectors such as business services, technology and creative industries, Southwark is ideally placed to take a leading role in the city's economic expansion. However, in order to maximise longer-term economic impact, the borough's strengths must be protected and developed and strong business growth must be translated into opportunity for all residents.

The council has an important influence over conditions for business. We will continue to develop practical and strategic links with businesses, so shared ambitions for local economic growth and opportunities are met.







**Our ambition is that:**

- Council decision-making takes full account of business needs, interests and opportunities, seeking advice from partners such as the Business Forum on emerging issues including the localisation of business rates and emerging issues associated with the UK's withdrawal from the EU
- Southwark continues to grow its business base and is a borough where large and small businesses thrive
- Southwark is a world-class place to do business with attractive centres where businesses choose to locate
- The borough is the place of choice for entrepreneurs to start a new business
- Businesses are valued customers of the council who benefit from responsive services that meet their needs
- High quality, flexible, well managed and affordable business space is available for start-ups and businesses that are ready to grow
- Southwark businesses are able to take advantage of growth opportunities afforded by regeneration and development in the borough

- Viable employment land is protected and developed for business growth
- Southwark employers play a full role in developing demand-led local skills provision and careers advice from schools, colleges, and universities
- Southwark's economy is adaptive to change and responds positively to the challenges and opportunities that arise, particularly as the UK leaves the EU

**To achieve this, we will:**

- Encourage business growth in Southwark's regeneration areas by pro-actively engaging with investors and developers, marketing Southwark as a place to do business
- Protect viable employment land and encourage its development to meet current and future business needs through the use of strong and effective planning policies
- Provide 500 new creative and small business units by 2018, by encouraging developers to include workspace as early as possible in the planning process and setting out clear requirements for its provision

- Invest in our relationships with large and small businesses through the Southwark Business Forum and other key business networks including BIDs, the Chamber of Commerce and others
- Ensure our customer access strategy recognises business as valued customers, which are provided with responsive, quality services that meet their needs
- Listen to and understand the skills needs of our employers, broker relationships with local providers and ensure training provision responds accordingly
- Invest in and encourage the development of affordable and flexible workspace that meets the needs of start-up and growing businesses
- Support small businesses to grow by providing information, advice and guidance through the business portal and through targeted programmes of support such as SEEDS



# Liftec

*think safety, work safely*

## MAINTAINING AND MODERNISING YOUR BOROUGH'S LIFTS

*Liftec are proud to partner and work collaboratively with the London Borough of Southwark in the interests of its residents and their built environment*

Liftec is dedicated to maintain, supply and modernise all types of lifts of different makes and models, providing a full 24 hour, 365 day call-out service ensuring a continued quality service in all public environments

[www.liftec.co.uk](http://www.liftec.co.uk)

24

3037293



CLARION  
HOUSING GROUP



LATIMER

In 2016 Affinity Sutton and Circle Housing Group merged to form Clarion Housing Group, the largest housing association in the country. Clarion Housing Group will build 50,000 desperately needed new homes over the next ten years, two thirds of which will be either for Affordable Rent or shared ownership. In addition, Clarion Housing Group will deliver the largest social investment programme in the sector through its charitable foundation which will see 4,000 unemployed people supported into work each year.

The Group has over 100 years' history of providing affordable housing in Southwark and is delighted to be continuing to play its part in this exciting period of regeneration. Having successfully bid for 'Lot B,' a collection of sites across the borough, Latimer, Clarion Housing Group's development and sales arm, is looking forward to delivering over 600 high-quality new homes in Southwark at different price points to meet a range of needs.

[clarionhg.com](http://clarionhg.com)

[latimerhomes.com](http://latimerhomes.com)

3037295

**STANDAGE**  
Intelligent Refurbishment

in



We are a medium-sized Main Contractor providing building refurbishment services to both the public and private sectors within London and the Thames Gateway.

Based in South East London, we have provided our unique package of intelligent refurbishment for over 77 years.



[www.standage.co.uk](http://www.standage.co.uk)

020 7740 2750

[info@standage.co.uk](mailto:info@standage.co.uk)

3037242



**Aurora Options charity was founded in 1981 to provide residential accommodation for adults with learning disabilities and adults on the autistic spectrum.**

**Our services have developed organically in response to local needs and the wishes of people who use them, their families, friends and supporters. We are currently providing services in Southwark, Lewisham and Bexley.**



## What we do

We provide support to individuals in a variety of ways including:

- Supported living
- Registered care
- Outreach support
- Day activities in the community hub
- Card making social enterprise

We believe that everyone should be part of the community where they live.

## Come and join us

### We offer:

- Entry into a new professional career with real prospects, job security and genuine satisfaction
- Flexible hours to suit
- Professional training, leading to a national qualification whilst on full pay
- Support with on the job coaching to guarantee success and job satisfaction

**Come and make a difference in a person's life. Support individuals to experience new things, be part of the community, get a job and develop their skills to becoming more independent.**

To discuss further, please call Gail Nicholls on 020 8469 8103

Email: [admin@auroraoptions.org.uk](mailto:admin@auroraoptions.org.uk) • Visit us at: [www.auroraoptions.org.uk](http://www.auroraoptions.org.uk)

Tweet us: [@auroraoptions1](https://twitter.com/auroraoptions1)

# Thriving Town Centres and High Streets

# 3

26





Southwark boasts some of London's most diverse and exciting town centres. Our high streets continue to adapt well to changing retail behaviours, retail space is well used and demand remains high. A visit to a Southwark high street or town centre is a great experience, whether to shop, spend leisure or family time, work or do business.

Successful town centres depend on a large range of components, and the council and its partners, including BIDs, can do much to help. We will continue to facilitate effective BIDs and town centre networks, bringing together those with an interest in successful town centres.





**Our ambition is that:**

- Southwark town centres are thriving and diverse with a strong sense of identity, and are great places to visit and shop
- Businesses and their employees are drawn to high streets and town centres as great places to work and trade
- Business Improvement Districts and other self sustaining local business networks flourish, engaging with their local communities for mutual benefit and providing a voice for local businesses
- Quality space is available for a range of business uses that support a diverse town centre economy
- Every Southwark resident has access to quality, affordable, and healthy food and produce from their local high street or market

- Payday lenders, betting shops, and outlets specialising in unhealthy food are effectively regulated and controlled
- Southwark town centres and high streets are accessible and well connected, both physically and digitally

**To achieve this, we will:**

- Revitalise and transform key town centres such as Elephant and Castle, Camberwell, Peckham, Canada Water, London Bridge, Bankside and Blackfriars, and create thriving new town centres in the Old Kent Road Opportunity Area
- Support thriving business communities in our town centres by protecting business space, encouraging growth through planning policies and effective management of our property portfolio
- Invest in our town centres, high streets, retail parades and

markets through initiatives such as High Street Challenge and other targeted programmes that improve local retail environments and promote digital integration

- Support the development of new BIDS and work with existing BIDS and other town centre networks to enable them to improve their local areas
- Invest in and support a strong cultural offer that enhances the economic diversity and vitality of our town centres and high streets
- Enforce anti-clustering policies to prevent the spread of payday lenders, betting shops, and outlets specialising in unhealthy food
- Use our strategic influence to improve connectivity including building capacity at Elephant and Castle station, the Bakerloo Line Extension and digital infrastructure across the borough



# 4

## Financial Wellbeing

29





30

Southwark champions the Living Wage as set by the Living Wage Foundation. A fair day's pay for a fair day's work is essential in ensuring that people in Southwark can fully participate in and benefit from a high skill, high wage, and highly productive local economy.

We will continue to work to promote workers' rights and union membership, targeting exploitative employment practices that reduce people's income and job security. In particular we will seek to protect employment rights from any threats arising from the UK's exit from the EU.

We know that the implementation of welfare reforms and the increase in low-paid work are causing difficulties for some. Supporting individuals to understand and manage the impacts of all these welfare reform changes; to be more able to address the complex issues in their lives; and to be financially sustainable and free of debt are crucial steps to improving the lives of our residents.







### Our ambition is that:

- Southwark is a Living Wage borough where all workers are treated fairly
- There is genuine pay equality in Southwark and for Southwark residents
- Business, trade unions and the council work together to ensure strong employee representation and fair employment rights
- Southwark residents on the lowest incomes have access to a high quality Universal Support service that offers personal budgeting, debt advice, digital skills, and transition to employment
- Southwark residents are supported to manage the impacts of welfare reform on their incomes, such as Universal Credit and the benefit cap
- Credit unions and other ethical financial services replace payday loans, doorstep lenders, and other forms of high-interest lending
- Issues affecting the cost of living for our residents are fully understood across the council and our services respond accordingly

- Southwark has a sustainable, confident and resourceful voluntary and community sector with effective partnership working providing financial wellbeing services that improve outcomes for residents

### To achieve this, we will:

- Work with employers across the borough to persuade them of the benefits of paying employees the London Living Wage, in line with our own commitment to be a Living Wage champion
- Continue to embed and promote the principles of equal pay and family friendly work practices across all our services and lobby nationally with business and trade unions for fair wages, fair employment rights and the elimination of the gender pay gap
- Work closely with DWP and partner boroughs to deliver effective digital and personal budgeting support and ensure pathways into employment for all residents who need it
- Continue to monitor and assess the impacts of welfare reform on our residents and ensure appropriate support is available through provision of effective advice and guidance

- Work with employers to develop responses to the increased cost of living and housing in Southwark
- Support alternatives to high interest payday and doorstep lenders and encourage use of credit unions through initiatives such as the Southwark Smart Savers scheme, encouraging young people to save by depositing £20 into every credit union account opened for an 11 year old
- Support a sustainable, confident and resourceful voluntary and community sector through effective partnerships and smarter commissioning to improve outcomes for residents



## Interpreting Direct Co (UK) Ltd

### The source of Interpreting Translation and Linguistic Services

**Interpreting Direct is an integrated, multilingual language solution. Our Skilled & Professional team is determined to bring the experience of Interpreting Direct to the businesses and hi-tech companies of the world.**

The advantage over most of the providers of the service is that we have been working as professional interpreters and translators for more than 10 years, on the "front line". Therefore we know how to satisfy the needs of both parties – customers and interpreters/translators.

Our range of services includes translation and interpreting in all world languages for public organisations, corporate clients and private individuals, localisation, editing, proofreading and cultural advice.

Interpreting Direct combines and enhances the knowledge and experience of its specialists in order to offer a complete and comprehensive service. Thanks to our dynamic team and the consistent innovations, we have been able to continually offer our clients new possibilities and improved forms of communication.

Ever since the establishment of Interpreting Direct, customer satisfaction has always been paramount to us. We carefully select our partners and along with our experience and knowledge, we ensure that all projects and assignments are both reliably and competently processed and completed.



**For more details please contact us**

**Tel: 020 8887 0055 / After business hours number 07983 995 835 · Email: [info@interpretingdirect.co.uk](mailto:info@interpretingdirect.co.uk)  
[www.interpretingdirect.co.uk](http://www.interpretingdirect.co.uk)**

3037243

# Energy saving

Switching off non-essential equipment in an office overnight saves enough energy to run a small car for 100 miles.

Saving energy saves you money, protects your reputation and helps combat climate change.

Your organisation could save up to 10% through housekeeping actions which cost little or nothing.



Source: [www.carbontrust.co.uk](http://www.carbontrust.co.uk)

**FAMILY MOSAIC IS ONE OF THE LARGEST HOUSING PROVIDERS IN LONDON, ESSEX AND THE SOUTH EAST.**

We provide affordable homes to rent and buy as well as care and support services to thousands of people who need extra support.

We also aim to improve the health, wealth and wellbeing of our customers through a range of projects and extra support.



Find out more:

Web: [www.familymosaic.co.uk](http://www.familymosaic.co.uk)

Twitter: @familymosaic

**we can**



3037055

**THE DRIVE CARE HOMES LTD**  
"A Driving Force In Care"



We are a quality provider of care to children and adults with learning disabilities and associated complex needs.

**OUR CARE SERVICES**

- \* Autism \* Sensory Development
- \* Learning Disabilities & Complex Needs
- \* Challenging Behaviour \* Dementia
- \* Short & Long Term Placement \* Respite

The Drive Care Homes are committed to providing high-quality residential care for people with learning disabilities through a commitment to the principles of support and choice.

**Contact**

18 Hatherley Rd, Sidcup DA14 4BG  
020 8308 1607 \* [info@thedrivecarehomes.org.uk](mailto:info@thedrivecarehomes.org.uk)  
[www.drivecarehomes.co.uk](http://www.drivecarehomes.co.uk)

33

3037128



**Phoenix Compliancy Management**  
4 Waterside Court  
Galleon Boulevard  
Crossways Business Park  
Dartford  
Kent DA2 6NX

Tel: 01322 224 200  
Email: [info@pcm.co.com](mailto:info@pcm.co.com)  
Web: [www.pcm.co.com](http://www.pcm.co.com)

**We are independent Safety Auditing Consultants working with Registered Providers**

As an M & E auditing company, Phoenix Compliancy Management is proud to work with the London Borough of Southwark in providing gas safety and auditing services to both district heating and domestic properties.

PCM deliver our services to local authorities and registered providers across the UK, providing auditing and specification services.

**At PCM we provide:**

- Trust
- Experience
- Knowledge
- Value
- Solutions
- Consulting

- ✓ Gas (domestic and commercial heating)
- ✓ Electrical
- ✓ Emergency lighting
- ✓ Door entry systems
- ✓ Warden control
- ✓ Legionella
- ✓ Water hygiene
- ✓ Lifts

We are able to tailor our services to suit your requirements.



Gas Advisory Services Limited trading as Phoenix Compliancy Management

3037184

**InSpired to Work**

For 5 years we have delivered Southwark Council's flagship youth employment service.

Are you a resident aged 18 - 25 starting your career and looking for work or training?

Are you a business that wants to mentor and support youth into work? Find out more:

[referrals.itw@in-spire.org.uk](mailto:referrals.itw@in-spire.org.uk)  
[in-spire.org.uk](http://in-spire.org.uk)  
020 7740 6767

3037128

**Electrical Testing**

*James Hill*

**Tel: 01493 751859**  
**email: [jdhill@electricaltesting.co.uk](mailto:jdhill@electricaltesting.co.uk)**  
**tw: @electest**

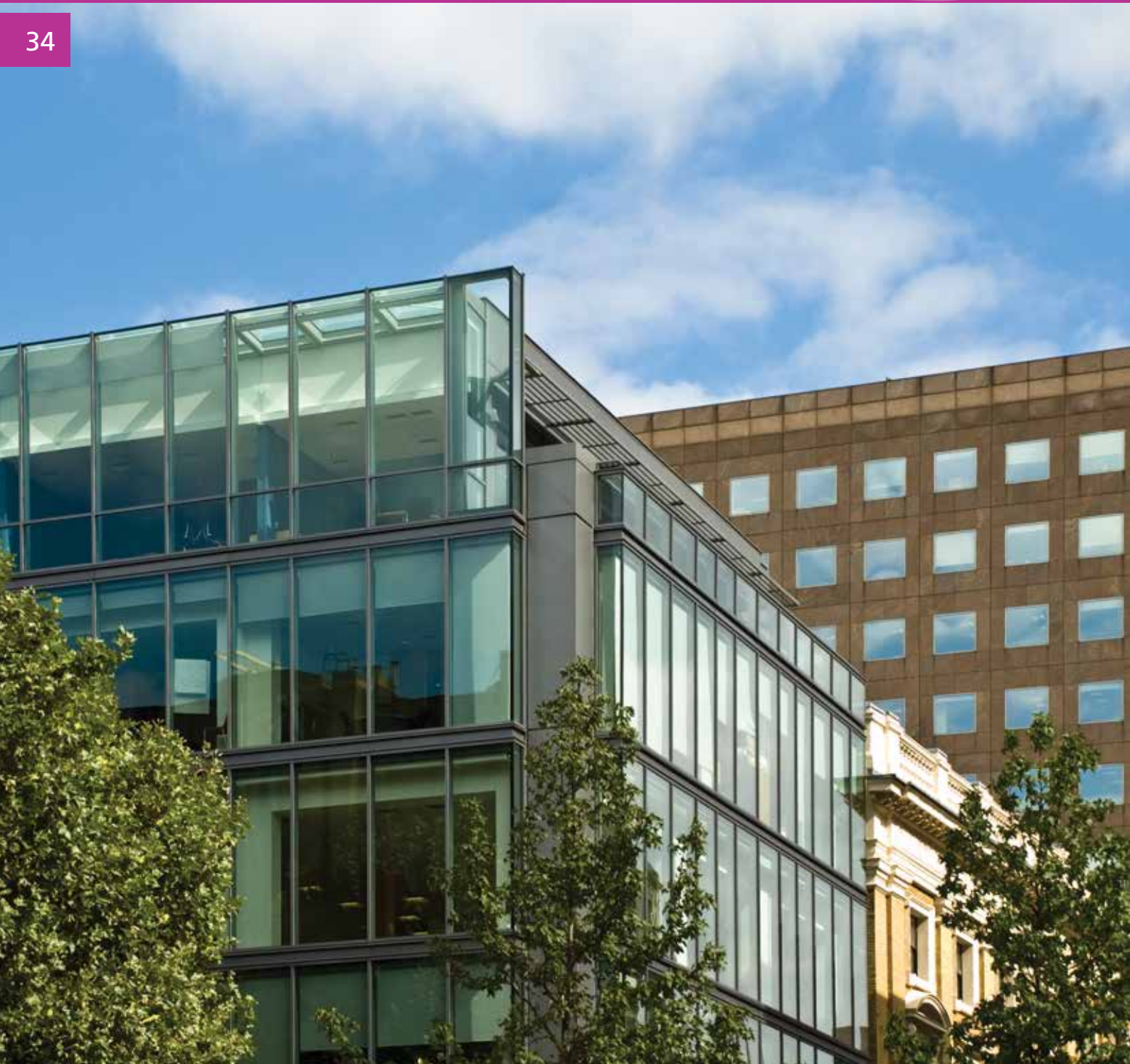
The Bridge, Acle, Norwich, Norfolk NR13 3AT

3037112

# Employment Support Projects

5

34





### Creating an apprenticeship in Southwark?

Free business support is available to any SME based in Southwark looking to create an apprenticeship. We are on hand to deal with any queries you may have and offer a range of services to guide you through the process of creating your apprenticeship scheme.

We offer:

- Support to decide whether an apprentice is for you
- Help tailoring your job description and advertisement to recruit
- Access to a range of recruitment channels to best suit your needs
- A training provider directory to help choose the best provider for you
- Advice and guidance on how to manage an apprenticeship including resources for new managers
- On-going support once your apprenticeship has started

If you require support, we will offer to meet with you to understand your needs and discuss how we can help. For more information, contact Rahul Sabir at [rahul.sabir@southwark.gov.uk](mailto:rahul.sabir@southwark.gov.uk) or call 020 7525 3532.

### Southwark Apprenticeship Standard:

The Southwark Apprenticeship Standard is based on ten years of experience delivering a highly successful scheme in partnership with some of our major contractors. The Standard addresses four key areas that are central to the success of any apprenticeship:

1. Secure employment, with a minimum contract of 12 months
2. Payment of the London Living Wage
3. Quality training provision
4. Mentoring and support

We're working with local employers to promote quality apprenticeships, celebrate excellence and offer support that works for businesses.

Some of our partners are already offering apprenticeships that meet the Southwark Apprenticeship Standard, others are working towards the Standard.

**If you'd like to find out who has signed up to the Apprentice Standard, take a look at our website, and if you'd like to find out how we can help you create an apprenticeship, visit our [Employ an Apprentice](#) page [www.southwark.gov.uk/apprenticeships](http://www.southwark.gov.uk/apprenticeships)**





36

## Recruitment support

Southwark Works offer recruitment support for Southwark businesses. Southwark Works have a range of candidates that are ready for work. Advisors will use information about past work experience and future employment expectations to find the right person for your job.

If our clients do not have the specific skills needed for the opportunities you have on offer, we will provide additional training to make sure they meet the job requirements.

Contact Southwark Works at Unit 239, Elephant & Castle Shopping Centre, London SE1 6TE  
Tel: 020 7740 8200 / Freephone 0800 052 0540 or  
email [info@southwarkworks.org.uk](mailto:info@southwarkworks.org.uk) and ask for the Employer Engagement Team.



# Useful Council Contacts

## Business Rates

To set up your business rates account and for comprehensive information and guidance  
**020 7525 5505**  
[businessrates@southwark.gov.uk](mailto:businessrates@southwark.gov.uk)

## Business Desk

Support and advice for Southwark Businesses  
**SouthwarkBusinessDesk@southwark.gov.uk**  
[www.southwark.gov.uk/business](http://www.southwark.gov.uk/business)

## Markets and Street Trading

For street trader registration and information about market pitches  
**020 7525 6000**  
[streettrading@southwark.gov.uk](mailto:streettrading@southwark.gov.uk)

## Procurement

For information on selling services and goods to the council  
**020 7525 0381**  
[procurement@southwark.gov.uk](mailto:procurement@southwark.gov.uk)

## The Food Team

To register your food business and for advice on hygiene and standards  
**020 7525 2000**  
[food@southwark.gov.uk](mailto:food@southwark.gov.uk)

## Parking

To buy parking permits  
**0844 800 2736**  
[parking@southwark.gov.uk](mailto:parking@southwark.gov.uk)

## Parking Design

For information about new parking bays, car clubs and parking policy  
**0800 138 9081**  
[parking@southwark.gov.uk](mailto:parking@southwark.gov.uk)

## Commercial Property

To find information on council commercial property for sale or rent  
**To buy: 020 7525 5562**  
[property@southwark.gov.uk](mailto:property@southwark.gov.uk)  
**To rent: 020 7525 5487**  
[lettings@southwark.gov.uk](mailto:lettings@southwark.gov.uk)

## Commercial Waste and Recycling

For information on local commercial waste companies and general advice  
**020 7525 2000**  
[sustainable.services@southwark.gov.uk](mailto:sustainable.services@southwark.gov.uk)

## Business Continuity Management

For information on how businesses should plan for coping in an emergency  
**business.continuity@southwark.gov.uk**

## Trading Standards

Advice on trading standard requirements  
**020 7525 2000**  
[tradingstandards@southwark.gov.uk](mailto:tradingstandards@southwark.gov.uk)

## Health and Safety at Work

Advice on how to ensure your place of work is safe for your employees and customers  
**020 7525 2000**  
[ohs@southwark.gov.uk](mailto:ohs@southwark.gov.uk)

## Planning - Building Control

Advice on complying with building regulations  
**0845 600 1285**  
[building.control@southwark.gov.uk](mailto:building.control@southwark.gov.uk)

## Planning Applications and Enquiries

For enquiries related to planning applications  
**020 7525 5403**  
[planning.enquiries@southwark.gov.uk](mailto:planning.enquiries@southwark.gov.uk)

## Highway/ Street Improvements

For enquiries about highways work and reporting disturbances  
**streetcare@southwark.gov.uk**

## Street Furniture

To report damaged street furniture or a faulty street light.  
**street.furniture@southwark.gov.uk**

## Traffic Orders

For information on traffic orders  
**temporarytrafficorders@southwark.gov.uk**

## Cleaner, Greener, Safer Programme

For information on related projects and grants  
**020 7525 2665**  
[cgs@southwark.gov.uk](mailto:cgs@southwark.gov.uk)

**For all other enquiries, contact the Southwark Council main switchboard on 020 7525 0000**

# Southwark Business Networks

38

**Better Bankside BID**  
[www.betterbankside.co.uk](http://www.betterbankside.co.uk)  
[info@betterbankside.co.uk](mailto:info@betterbankside.co.uk)  
020 7928 3998

**Camberwell Business Network**  
[www.se5forum.org.uk](http://www.se5forum.org.uk)  
[cbn@se5forum.org.uk](mailto:cbn@se5forum.org.uk)

**Federation of Small Businesses**  
[www.fsb.org.uk](http://www.fsb.org.uk)

**Latin Elephant**  
[www.latinelephant.org](http://www.latinelephant.org)  
[info@latinelephant.org](mailto:info@latinelephant.org)

**Rye Lane Traders' Association**  
[www.peckhamvision.org/wiki/RLTA](http://www.peckhamvision.org/wiki/RLTA)  
ryelanetraders@gmail.com

**South Bank BID**  
[www.southbankbid.co.uk](http://www.southbankbid.co.uk)  
[RID@southbanklondon.com](mailto:RID@southbanklondon.com)  
020 7202 6900

**Southwark Association of Street Traders**  
[streettrading@southwark.gov.uk](mailto:streettrading@southwark.gov.uk)

**Southwark Chamber of Commerce**  
[www.southwarkcommerce.com](http://www.southwarkcommerce.com)  
[admin@southwarkcommerce.com](mailto:admin@southwarkcommerce.com)  
07477 581 977

**Team London Bridge BID**  
[www.teamlondonbridge.co.uk](http://www.teamlondonbridge.co.uk)  
[info@teamlondonbridge.co.uk](mailto:info@teamlondonbridge.co.uk)  
020 7407 4701

**The Blue Bermondsey BID**  
[www.thebluebermondsey.com](http://www.thebluebermondsey.com)  
[info@thebluebermondsey.co.uk](mailto:info@thebluebermondsey.co.uk)

**Tower Bridge Road Alliance**  
[www.towerbridgeroad.com](http://www.towerbridgeroad.com)  
[info@towerbridgeroad.com](mailto:info@towerbridgeroad.com)

**WeAreWaterloo BID**  
[www.wearewaterloo.co.uk](http://www.wearewaterloo.co.uk)  
[info@wearewaterloo.co.uk](mailto:info@wearewaterloo.co.uk)  
020 7620 1201







**Advertising • Sales • Database • Copy • Images  
Maps • Design • Proof, Print, Deliver • Web**

Burrows produce printed publications, Internet sites and applications, databases, software and electronic publications for major public and private organisations throughout the United Kingdom. Our unique selling point is that we are able to subsidise part or all of the costs of our service through the sales of advertising.

Our clients are predominantly Government Bodies, Local Authorities and Trade Associations - all of whom have responsibilities to publish information to specific marketplaces. Having operated in these marketplaces for over 100 years we have a clear understanding of the needs and priorities of our clients, and are able to serve them to the highest standard.

Our specialist service is a comprehensive one stop shop solution starting with consultancy, through multi-media productions, to post-publishing market research and includes wide ranging support services such as data management, software development and income generation.

---

Cantium House, 2nd Floor, Railway Approach, Wallington, Surrey SM6 0DZ  
Tel: 020 8773 3000 • Email: [postmaster@burrows.co.uk](mailto:postmaster@burrows.co.uk)  
Web: [www.burrows.co.uk](http://www.burrows.co.uk)

A young woman with brown hair tied back, wearing a pink and white striped shirt, is smiling and looking down at a newspaper she is holding. The background is blurred, suggesting an indoor setting with other people.

# Let's re-use paper where possible.

Each year in the UK we use  
10.4 million tonnes of paper and  
cardboard and it takes up to 40,000  
litres of water to make every one.

Source: Confederation of Paper Industries



[www.wrap.org.uk/recycleatwork](http://www.wrap.org.uk/recycleatwork)

help your business, help the environment

# Southwark database is now online at [www.burrows.co.uk/southwark](http://www.burrows.co.uk/southwark)

The online version enables you to search for business by name, type of business and location. Simply type what you are looking for and decide how you want to sort the results.



Join the online directory\*

**IT'S FREE**

#### Who

business name

#### What

business type

#### Where

business postcode

MAP

Update



The database is **FREE** to join for all local businesses, why not register today?



You can also keep your organisation's **details up to date** including social media links and opening hours; just find your entry and click the **Update** link. This will ensure potential customers have access to accurate information about your company.

**The Business Finder** has powerful search features, allowing multiple fields of the database to be selected and integrated. The additional Bookmark Feature allows you to save the search results and refer back to them at any time - an invaluable marketing tool.

**Upgrading:** Once you have installed your Business Finder, additional features can be upgraded for a one-off charge from £150 to £400 + VAT, dependent on the level of service you require.

Please call  
**020 8773 3060** for  
more information.

This data has been verified by Burrows Communications Ltd on behalf of Southwark Council.



**Grosvenor has a vested interest in the future shape of our city. Our aim is to create and manage attractive and vibrant places where people choose to live and work.**

Grosvenor is in the early stages of developing plans for a 12-acre site in Bermondsey, which is expected to include new homes, a secondary school, community amenities, employment and retail space, and new and improved streets and spaces.

We believe that developing and renewing places and neighbourhoods in partnership with existing communities creates a better result, and so we will continue to engage with our stakeholders and local communities to shape the future of this neighbourhood together.

**Grosvenor and Bermondsey  
working together**

[www.belonginbermondsey.com](http://www.belonginbermondsey.com)